

# THE MIKADO MESSENGER



2007 PRINCE OF WALES  
Building Britain's Most Powerful Steam Locomotive

Welcome to edition No.26 of *The Mikado Messenger*. The Messenger aims to provide a regular bulletin of news about the construction of No. 2007 *Prince of Wales*.

We'd like to wish our Founders, Covenantors and supporters a very Happy Christmas and a peaceful New Year as well as thanking you all for your support during 2016. Following a highly successful A1 Steam Locomotive Trust annual convention which included a visit to Darlington Locomotive Works to see progress on *Prince of Wales* the workshop has returned to normal.

graham.langer@p2steam.com

Editor of *The Mikado Messenger*

## FRAMES

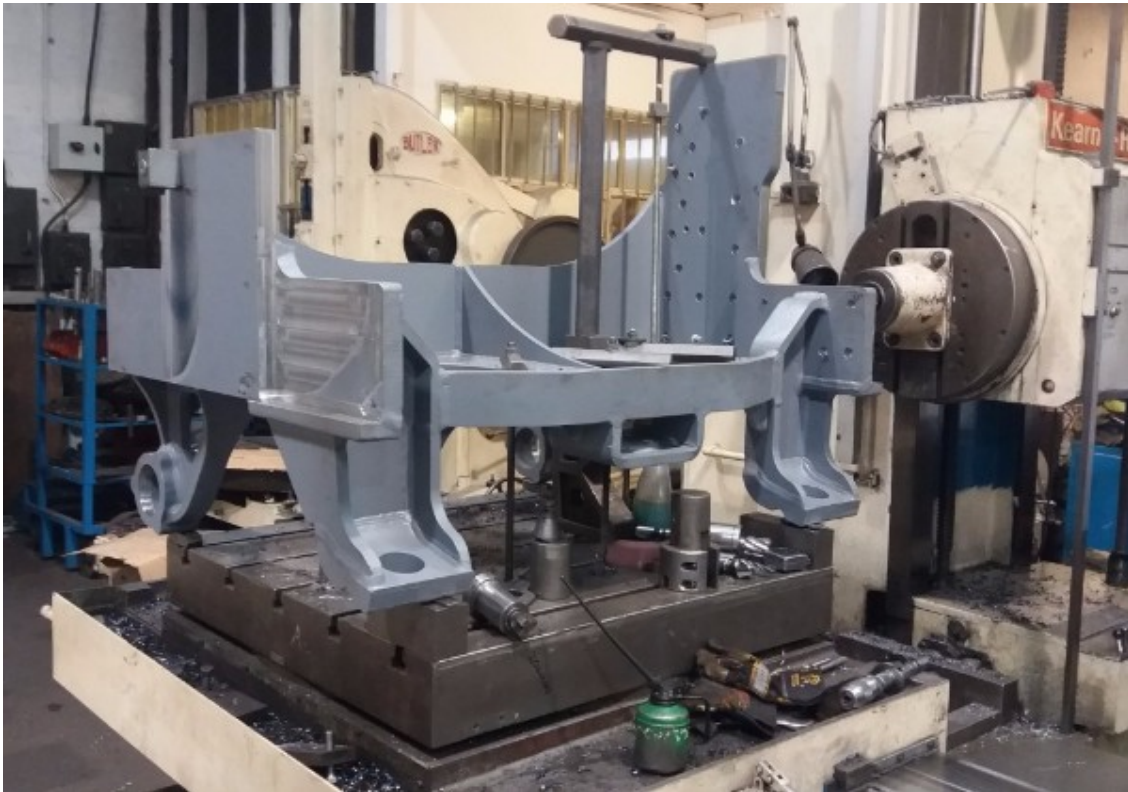
Much detail work has been completed including riveting of the smoke lifting plate joint strips and permanent riveting and bolting of the front footplating. The chimney has also had all its mounting bolts and studs fitted.

Following delivery from North View Engineering of the remaining coupled wheel manganese steel faced hornblock liners, detail fitting of them is underway. This has involved ensuring that the liners are making full contact with the hornblocks followed by opening out the bolt holes and reaming to take driven bolts.

Once all 16 of them had been fitted, the gaps between the liners have been accurately measured and mapped. The aim is to have both liners in each hornblock truly square to the frames and parallel with each other. Individual liners will then be surface ground where necessary to achieve this. The initial results of the mapping are encouraging, with the horn faces very close to square across the frames and all with a small amount of material left on to provide for adjustment when the axle and cannon boxes are fitted. This is illustrating the benefit of having the frame plates and hornblocks CNC (Computer Numerical Control) machined to close tolerances from the 3D models. The hornblocks and liners have gone together with minimal hand fitting.



Final machining of the last of the major frame stays (the leading brake stay) is nearing completion at North View Engineering Solutions in Darlington.



## WHEELSETS

The plain coupled axles have at last been delivered from South Africa and are presently at Unilathe at Stoke on Trent for finish machining. In the meantime Unilathe has completed the initial machining of the crank axle stubs and crank pin, which along with the crank webs have been sent to South Devon Railway Engineering for assembly. Unilathe are making good progress with machining the crank pins (from axle material - specifically from axle stock made for Class 56 diesel locomotive wheelsets).



Meanwhile in order to assist in balancing the coupled wheels, they have been laser scanned to confirm that the centre of mass of each wheel is where we think it is! As part of the process to check the results of the scanning, each wheel has been weighed so that the density of the wheels can be compared by calculation with the known density of cast steel. Timsons at Kettering are making good progress with machining the cannon and axleboxes.



## DESIGN

Work continued to complete detailed manufacturing drawings for the remaining frame stays, spring hanger brackets and the pony truck frame.

## P2 ROADSHOWS DURING 2017

The A1 Steam Locomotive Trust recently announced that it will be holding a series of



presentations on the project to build new Gresley class P2 No. 2007 *Prince of Wales* along the route of the East Coast Main Line from London to Edinburgh and all the way to Aberdeen during 2017. Each presentation will feature key Trust personnel including Mark Allatt (Chairman) and David Elliott (Director of Engineering) and will cover the background to the project, progress to-date, future plans and details of how to get involved. **We would encourage you to attend one of these Roadshows and bring along some friends and family members who would be interested in hearing about the project.** The presentations will run from 11:00hrs to 13:00hrs on each of the days listed below and are open to existing supporters and interested members of the public:

- Saturday 14<sup>th</sup> January 2017 - The London Transport Museum, London
- Saturday 18<sup>th</sup> February 2017 - The Great Northern Hotel, Peterborough
- Saturday 18<sup>th</sup> March 2017 - Doncaster Museum & Art Gallery, Doncaster
- Saturday 22<sup>nd</sup> April 2017 - York Railway Institute, York
- Saturday 13<sup>th</sup> May 2017 - Darlington Locomotive Works, Darlington
- Saturday 17<sup>th</sup> June 2017 - Newcastle Mining Institute, Newcastle
- Saturday 1<sup>st</sup> July 2017 - Edinburgh Jury's Inn, Edinburgh
- Saturday 14<sup>th</sup> October 2017 - Dundee Heritage Trust Discovery Point, Dundee
- Saturday 25<sup>th</sup> November 2017 - Aberdeen Jury's Inn, Aberdeen.

## FUNDRAISING

Public interest in seeing a new Gresley class P2 become a reality sooner rather than later is high and 770 people have already signed up to the 'P2 for the price of a pint of beer per week' (£10 per month or more) covenant scheme since its launch. In addition to this core scheme, funds have been raised through The Founders Club (over 360 people have donated £1,000 each - target 100 people, now closed), The Boiler Club (well over 100 people have pledged £2,000 each - target of 300 people), The Mikado Club (over 100 people have pledged £1,000 each - target 160 people/£200,000), Dedicated Donations (over £180,000 from existing supporters sponsoring a variety of components) and the sponsorship of the locomotive's distinctive front-end by The Gresley Society Trust. This means that the project has already received pledges of 45% (including Gift Aid) of the £5m needed to complete the new locomotive by 2021.

For more information on how you can help to build Britain's most powerful steam locomotive visit [www.p2steam.com](http://www.p2steam.com), email [enquiries@p2steam.com](mailto:enquiries@p2steam.com) or call 01325 460163.

## THE MIKADO CLUB

WE WANT EIGHT AND WE WON'T WAIT - £200,000 appeal launched to wheel No. 2007 *Prince of Wales* by Spring 2017.

On 29<sup>th</sup> March we announced a new £200,000 appeal to wheel No. 2007 *Prince of Wales* by Spring 2017. When achieved, it will be the first time for over 70 years that one of this iconic class of locomotives has stood on its wheels - the last original Gresley class P2 No.

2003 *Lord President* was rebuilt into an ungainly Thompson class A2/2 Pacific in December 1944.

Following the success of The Founders Club (to get the project to the point of cutting the frames) and The Boiler Club (to fund the construction of the boiler), the Trust has decided to establish The Mikado Club to raise an estimated £200,000 required to wheel No. 2007 during 2017.

If the project to complete No. 2007 *Prince of Wales* in 2021 is to remain on schedule the engine needs to be wheeled this year. The Trust has therefore set itself the challenge of raising £200,000 through The Mikado Club from 160 supporters each donating £1,000 (plus Gift Aid) to the project in up to eight payments of £125 by standing order. This estimate excludes the components already ordered or delivered such as wheels, tyres, axles, bearings and cannon boxes some of which are still available to sponsor as Dedicated Donations.

In return for supporting this appeal, special benefits for members of The Mikado Club include:

- Reserved seat on one of No. 2007's first main line train
- Reasonable access to No. 2007
- Opportunity to purchase an exclusive Mikado Club badge
- Opportunity to join one of the teams building No. 2007
- First choice of other components to sponsor
- Special limited edition version (signed/numbered) of Stephen Bainbridge's new painting of No. 2007 *Prince of Wales* at Darlington station
- Special Mikado Club day with *Tornado*.

We are confident that we will have completed the rolling chassis for No. 2007 *Prince of Wales* in Spring 2017 having reached over 65% of our target for The Mikado Club. We would encourage those of you who haven't yet contributed to this exciting project to help us to meet these deadlines by becoming a member of The Mikado Club. It's time to get on board!

To become a member of The Mikado Club, email [enquiries@p2steam.com](mailto:enquiries@p2steam.com), call 01325 460163 or visit [www.p2steam.com](http://www.p2steam.com) for more information.

## THE BOILER CLUB

It is our desire to leave No. 2007 *Prince of Wales* debt free upon completion and therefore our aim is to raise at least £600,000 for The Boiler Club from 300 supporters each donating £2,000 to the project (in up to 40 payments of £50 by standing order). We currently have over 100 supporters signed up to The Boiler Club.

Special benefits for members of The Boiler Club:

- Opportunity to buy a ticket (seat already reserved) on one of No. 2007's first main line train
- Reasonable access to No. 2007
- Opportunity to purchase an exclusive Boiler Club badge
- Opportunity to join one of the teams building No. 2007
- First choice of other components to sponsor
- Special limited edition version (signed/numbered) of the first official painting of No. 2007 *Prince of Wales* with No. 60163 *Tornado*

- Special Boiler Club day with *Tornado*

For more information on how you can help to build Britain's most powerful steam locomotive [visit our website](#), [email us](#) or call 01325 460163.

## P2 BOILER CLUB & MIKADO CLUB EXCLUSIVE BADGES

P2 BOILER CLUB & MIKADO CLUB EXCLUSIVE BADGES ARE NOW AVAILABLE TO BUY!  
These badges are only available to Boiler Club or Mikado Club members.

To purchase your badge please send a cheque for £5 made payable to The P2 Steam Locomotive Company to The A1 Steam Locomotive Trust, Darlington Locomotive Works, Hopetown Lane, Darlington DL3 6RQ

## DEDICATED DONATIONS

Since its launch in 2014, 278 individual components have been sponsored as part of the Dedicated Donations Scheme, this is in addition to many of the smokebox components which have been sponsored directly by The Gresley Society Trust.

If you would like to sponsor a component on No. 2007 *Prince of Wales*, please contact [dedicated.donations@p2steam.com](mailto:dedicated.donations@p2steam.com)

## PRESENTATIONS

If any railway society - or indeed other interested group - would like a presentation on the project they should contact us by email [enquiries@p2steam.com](mailto:enquiries@p2steam.com)

## OPEN DAYS AT DARLINGTON

We hold public open days at Darlington Locomotive Works on the third Saturday of every month. During April through to September we are open 10:00hrs to 16:00hrs, October through to March, we are open 11:00hrs - 15:30hrs.

## VOLUNTEER

As ever we are looking for more volunteers. It takes a lot of people to both keep *Tornado* on the main line and also to build *Prince of Wales*. There is always so much more that we can achieve with the right volunteers with the right skills and can-do attitude. Please email [enquiries@p2steam.com](mailto:enquiries@p2steam.com) if you think you can help.

For more information on the project to build Gresley class P2 No. 2007 *Prince of Wales* please visit [www.p2steam.com](http://www.p2steam.com), email [enquiries@p2steam.com](mailto:enquiries@p2steam.com) or follow us on Facebook, Twitter and LinkedIn.



Facebook



Twitter



Website



Email

*Copyright © 2016 The A1 Steam Locomotive Trust, All rights reserved.*

**Our mailing address is:**

The A1 Steam Locomotive Trust, Darlington Locomotive Works, Hopetown Lane, Darlington. DL3 6RQ